

RPC over HTTPS

Rpc over https will allow an outlook client to connect to the exchange server without having to establish a vpn connection.

This paper covers the following task

Connect to the FSU exchange environment using RPC over HTTPS.

- 1. Configuring a new Outlook Profile**
- 2. Configuring an existing profile.**

*notes... Client must be running Outlook 2003 ver. 11.0 or greater

If you are setting up a new **client profile** from off campus you will need to connect to FSU's network through VPN to configure your outlook profile for connecting RPC over HTTPS.

(Optional) for older versions of XP office

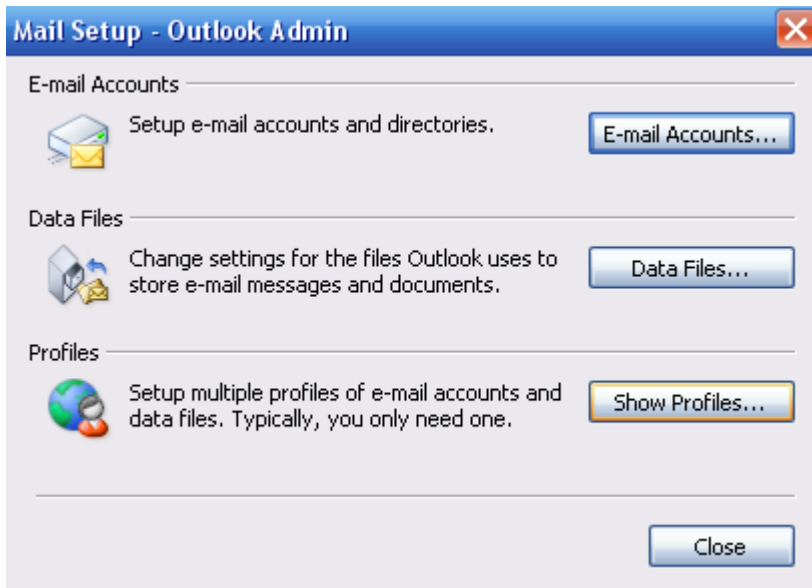
First, install the hotfix from this location: This is usually not necessary but I put it here just in case.

<http://www.microsoft.com/downloads/details.aspx?FamilyId=8670CFF6-3D95-496E-8DF4-13D8F38715FA&displaylang=en>

Please note the Cached Exchange Mode is enabled. This is really important for reducing traffic over the WAN. In this mode Outlook 2003 caches all mail locally and synchronizes with Exchange 2003 only when necessary.

1. Configuring a new Profile in Outlook to connect to the FSU exchange environment using RPC over HTTPS.

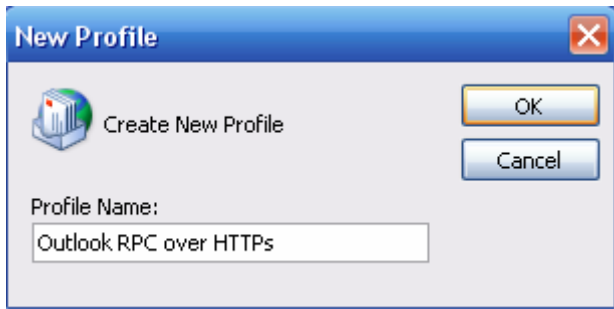
From Control Panel open Mail. Select Show Profiles.



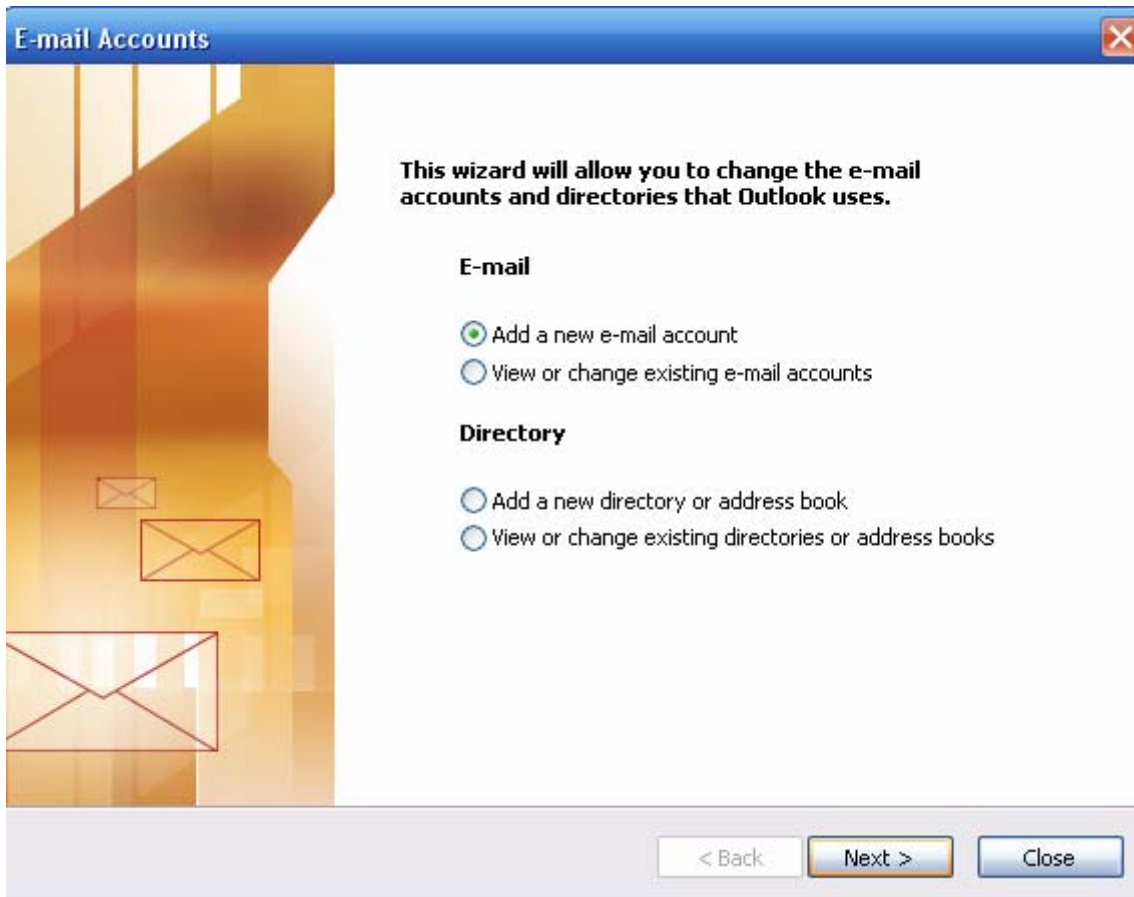
Select radio button "Prompt for profile to be used"
Click add to create a new profile. This profile will be used to test rpc over https thus preserving your real profile.



Create a distinctive name for the Profile.

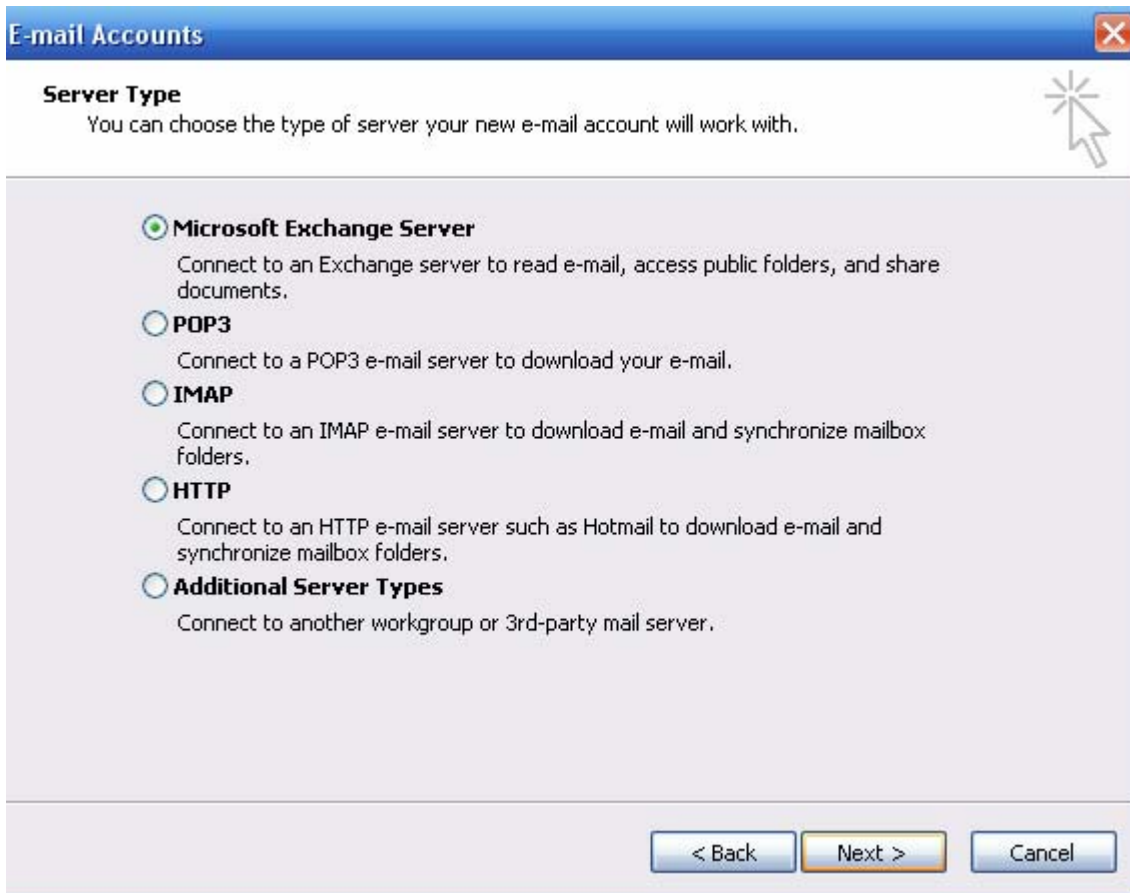


The next screen check the radio button “Add a new e-mail account”

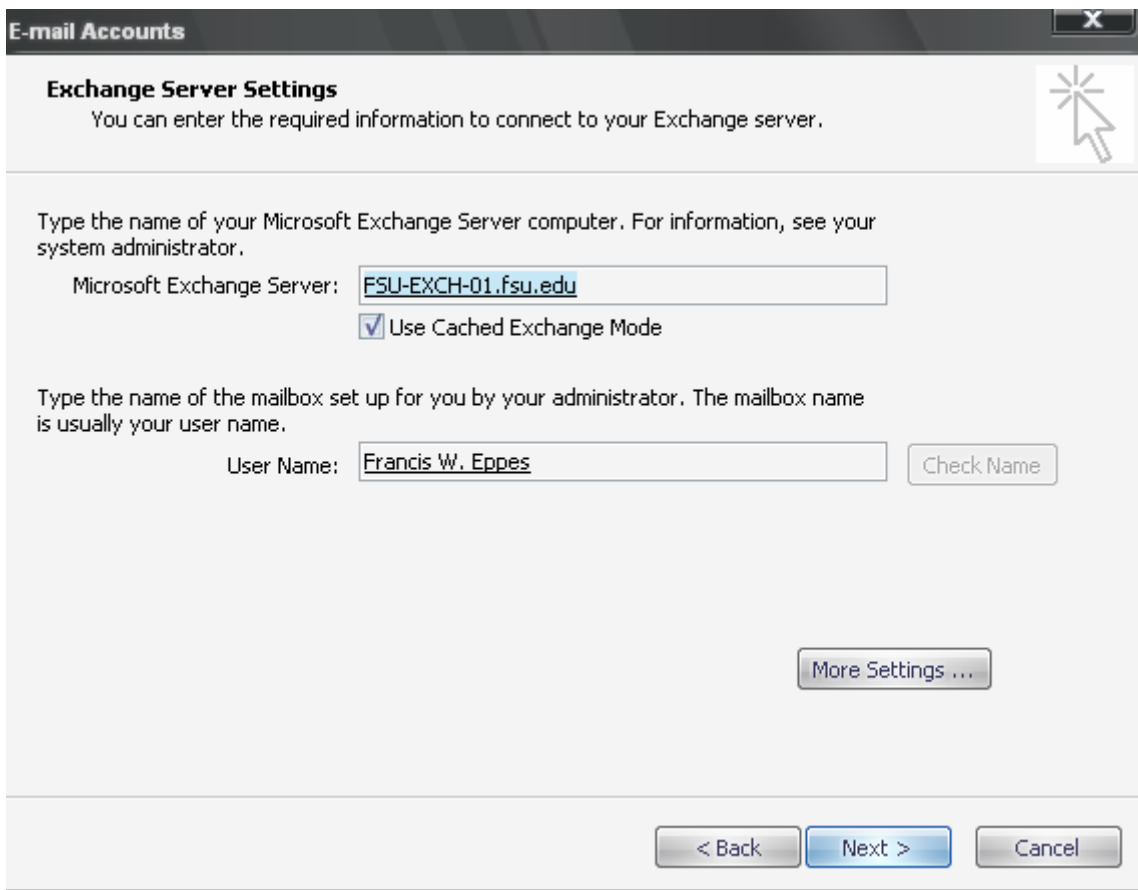


Choose next

Next select Radio button “Microsoft Exchange Server”



Next use "fsu-exch-01.fsu.edu" for the Microsoft Exchange Server
Enter in your email user name. This should have been assigned to you already.




After entering in your information select “Check Name”

Login with your email account information.



E-mail Accounts X

Exchange Server Settings 

You can enter the required information to connect to your Exchange server.

Type the name of your Microsoft Exchange Server computer. For information, see your system administrator.

Microsoft Exchange Server:

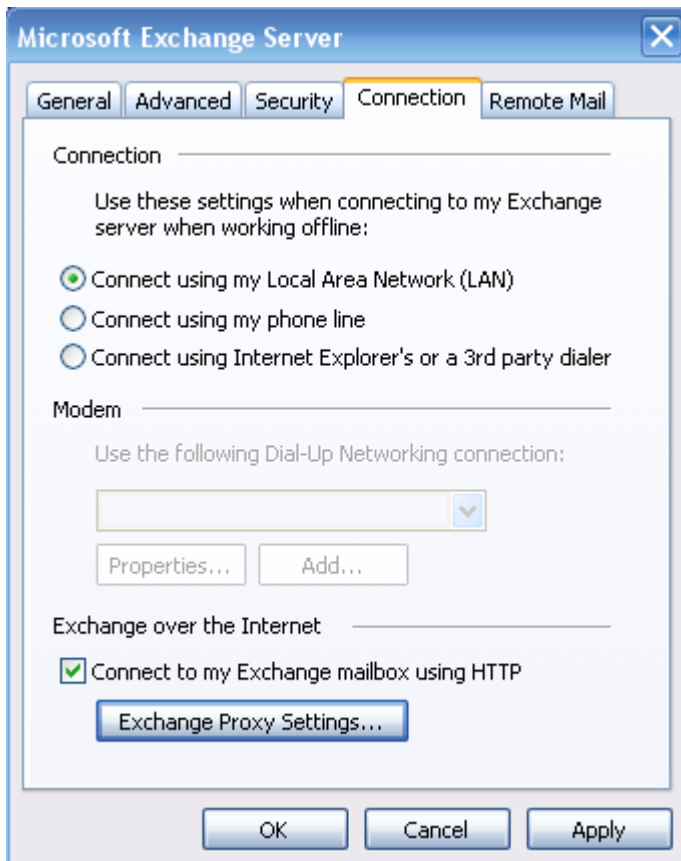
Use Cached Exchange Mode

Type the name of the mailbox set up for you by your administrator. The mailbox name is usually your user name.

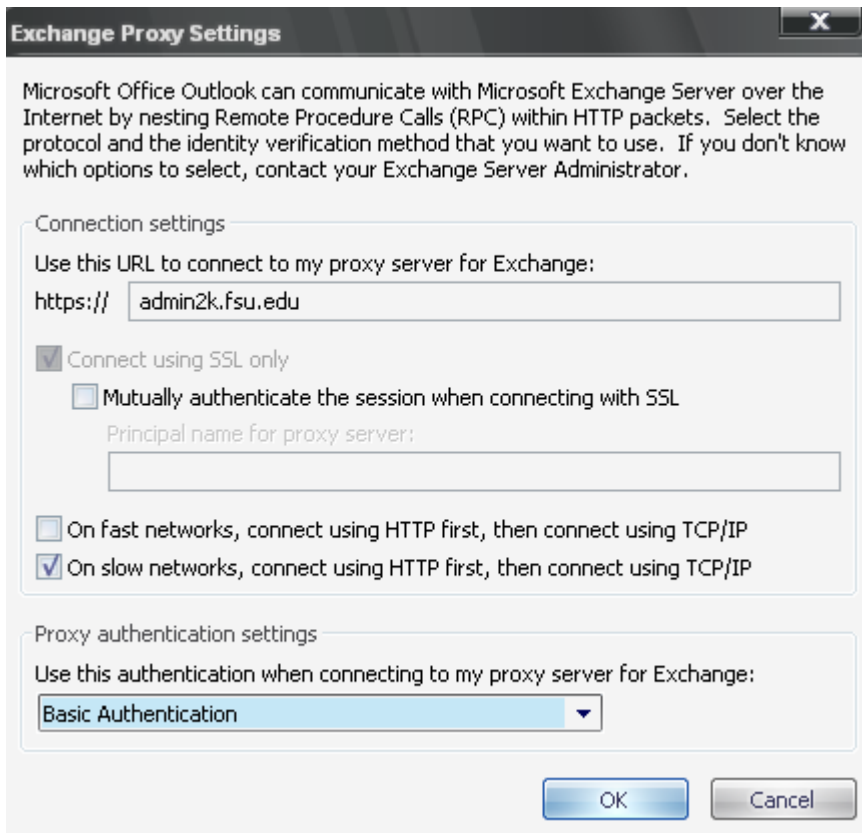
User Name:

Next select “More Settings”.

Select the “Connection Tab” Check “Connect to my Exchange mailbox using HTTP.”



Next click "Exchange Proxy Settings"
And enter the info just like below.



Click ok until you have closed all windows.

2. Configuring an existing outlook profile.

If you have already setup a Profile while connected to FSU's network you can configure your Exchange Proxy settings without being connected to FSU's network. Select "View or Change an existing account" **Cancel all login prompts and make the Exchange Proxy setting changes like the picture above. Close all dialog boxes Restart outlook.